



RECP #: 752687
 RECORDED 5/8/2019 AT 1:12 PM BK# 2620 PG# 1729
 Debra K. Lee, CLERK OF LARAMIE COUNTY, WY PAGE 1 OF 1

STATE OF WYOMING CORNER RECORD

(In compliance with the CORNER PERPETUATION AND FILING ACT, Wyoming Statutes, 1997 Section 33-29-140, et. seq., and the Rules and Regulations of the Board of Registrations for Professional Engineers and Professional Land Surveyors)

NORTHWEST CORNER SECTION 31, T. 18 N., R. 61 W., 6TH P.M., LARAMIE COUNTY, WYOMING

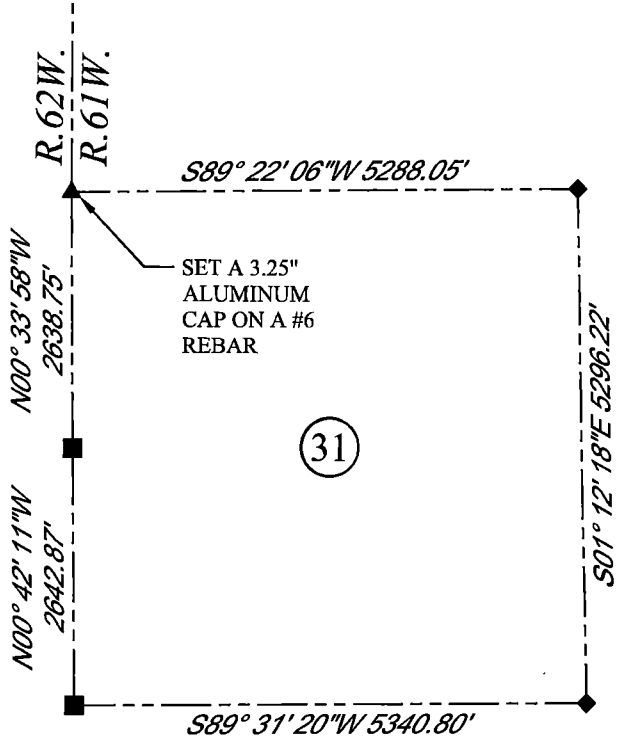
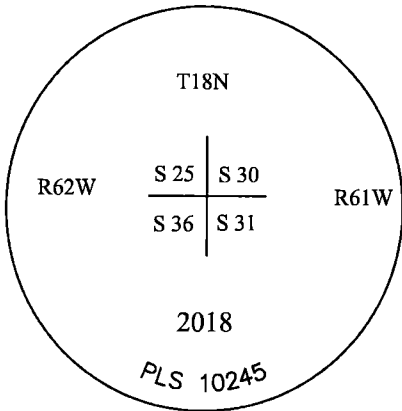
GLO: SET A SANDSTONE 18X10X7. 12" DEEP WITH ONE NOTCH ON THE SOUTH AND 5 ON THE NORTH EDGE FOR CORNER TO SECTIONS 25, 30, 31, AND 36.

FOUND: NOTHING.

SET: 3.25" ALUMINUM CAP 4" ABOVE SURFACE, MARKED AS SHOWN. SET A FIBERGLASS ROD ON NORTH SIDE. POSITION RE-ESTABLISHED BY SINGLE PROPORTION.



SCALE: NONE
 NORTH DETERMINED BY
 G.P.S OBSERVATIONS



LEGEND:

- FOUND BLM CAP
- FOUND USFS CAP
- FOUND STONE
- FOUND PRIVATE MONUMENT
- ◇ CALCULATED POSITION
- ▲ SET MONUMENT (LS10245)
- SECTION LINE

DATE OF FIELD WORK: 10/06/2018 OFFICE REFERENCE: MERIDEN

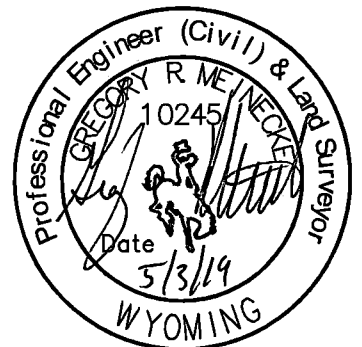
CROSS INDEX DIAGRAM

	1	2	3	4	5	6	7	8	9	10	11	12	13	14	15	16	17	18	19	20	21	22	23	24	25	
A																										
B																										
C			6			5				4				3					2						1	
D																										
E																										
F																										
G			7			8				9				10					11						12	
H																										
J																										
K																										
L			18			17				16				15					14						13	
M																										
N																										
O																										
P			19			20				21				22					23						24	
Q																										
R																										
S																										
T			30			29				28				27					26						25	
U																										
V																										
W																										
X			31			32				33				34					35						36	
Y																										
Z																										
	1	2	3	4	5	6	7	8	9	10	11	12	13	14	15	16	17	18	19	20	21	22	23	24	25	

WOOD
 2615 AVIATION DRIVE
 SHERIDAN, WY 82801
 PH: 307-675-6400



THIS CORNER RECORD WAS
 PREPARED BY ME OR UNDER
 MY DIRECTION AND
 SUPERVISION,
 SEAL AND SIGNATURE



CORNER NAME: NORTHWEST SECTION: 31 T. 18N., R. 61 W. ; 6TH P.M. CROSS-INDEX # V-1
 SBRPELS/PLSW: MARCH 1994; PLSW JANUARY 1998